

AL2 Residential / PRIVACY SHUTTERS

Enhance Your Personal Privacy



info@qmiosa.com / 800.446.2500 / www.qmiosa.com

QMi[®]
Security Innovations

QMi AL2 Shutters

Provide Luxurious Privacy and Insulated Comfort

SAVE ENERGY AND ENJOY PRIVACY



Energy & Privacy



Home Security



Weather Protection

FEATURES

- European-style shutter with slats made of foam-filled aluminum for upgraded insulation.
- Light slits for a gentle illumination while preserving privacy.
- Designed to reduce heat load for a relaxed environment.
- Noise-free, peaceful operation.
- Offers excellent shading from the sun.

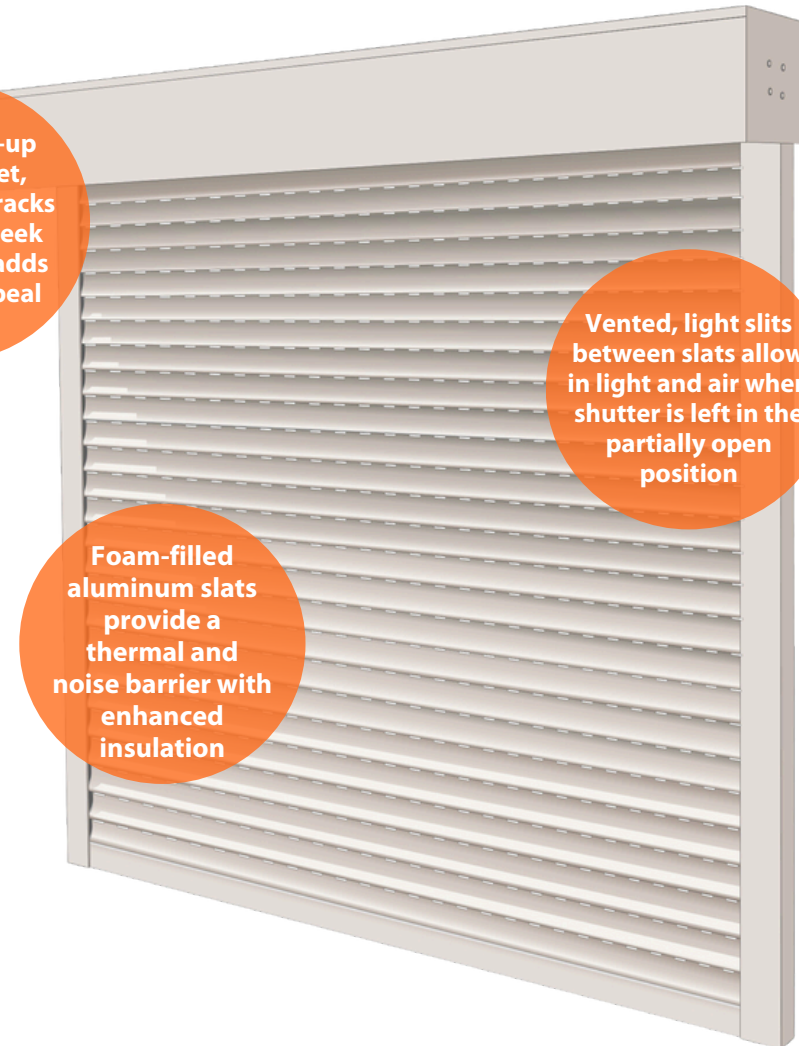
OPTIONS

- Versatile housing styles to match your home decor.
- Manual and motorized operators for any opening type.
- Several standard and custom colors to choose from.

Flexible roll-up with discreet, narrow side tracks make for a sleek shutter that adds aesthetic appeal

Foam-filled aluminum slats provide a thermal and noise barrier with enhanced insulation

Vented, light slits between slats allow in light and air when shutter is left in the partially open position



Enhanced Privacy



Ivory AL2 provides a secure noise barrier in a bustling urban environment.

CAREFULLY CRAFTED, CONVENIENT COMFORT

European-inspired, sleek AL2 shutters are expertly crafted from roll-formed aluminum and foam-filled. They offer a barrier against noise, weather, and intrusions while ensuring privacy and shade from the sun.

- 42mm (1.65 in.) slat height designed perfectly energy-efficient protection with a modern edge.
- Lowers thermal impact for a more relaxed sanctuary, saving heating energy and improving passive cooling.
- Offers privacy with an indulgent, stylish touch.
- Provides secure airflow for a breezy, worry-free experience.
- Tames the bustle of the world for quiet comfort.



AL2 Privacy shutters provide the perfect fit for a back porch sanctuary.

Illuminating Atmosphere

SOPHISTICATED SOLITUDE, SERENE STYLE

Elevate your ambiance and aesthetics with AL2, where elegance meets practicality for luxurious living.

- Impeccably crafted with roll-formed aluminum profiles, AL2 adds a touch of sophistication to your space.
- Discreet light slits balance privacy with a soft glow of natural light.
- Featuring a sleek, design with a maximum size of 90 sq ft, AL2 shutters are perfect for any window.



Light slits provide gentle illumination for a comfortable ambiance.



AL2 is also a versatile choice for commercial spaces requiring light security, including bars and countertop applications.

Housing Style and Finish Options

HOUSING SHAPES

Whether you prefer modern 90° angles, enjoy a classic 45° angle, or like the curves of a round design, we have box housing choices tailored to fit your style and match your home's aesthetic.

Box Housing

Constructed of 3105-H12 alloy 0.034 in. thick 6063 - T6 aluminum and available in 6, 6.5, 7, and 8 in. sizes.



90°



45°



Round



A 90° box housing shown here on brown AL2 shutters being effortlessly operated using a manual strap box.

SLAT PROFILE

The AL2's curtain is made up of sleek 1.65 in. slats, infused with a medium-density structural foam filler. This design provides enduring style with superior insulation.

Tailored for smaller spaces, the AL2 combines a sleek, sophisticated approach with practicality. While offering basic protection, its primary charm lies in enhancing the aesthetics of compact areas with its refined styling.

AL2 shutters are not hurricane rated.

COLOR OPTIONS

Powder coat and wet paint options for both standard and custom colors are available.

Contact your QMi Sales or Project Support Representative for pricing and lead times on custom color options.



Clear Anodized



Beige



Bronze



Brown



White



Gray



Ivory



Custom

Lock and Control Options

SECURE LOCKS

Adaptable locking solutions with easy maintenance features and automated or manual use. Designed for residential settings, our lock options ensure effortless installation and dependable security.

General Base Slat

- Gear, or strap operators using box housing mechanisms for locking feature.
- Slightly different configurations for each operator.

General Base Slat (motor)

- Motorized operator uses system brake to provide locking for entire curtain.

Slide Lock

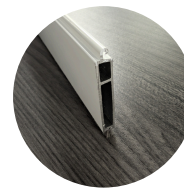
- Supplementary locking for higher security manual applications.
- Used for both floor and knee wall window installations.

Lock Slat

- Retractable for easy installation and ongoing shutter maintenance. (if required)
- Typically used for residential sliding doors and windows.
- Mid-curtain cylinder key.



General Base Slat, Auto-Brake
(Gear and Strap)



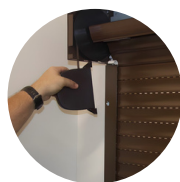
General Base Slat, Auto-Brake
(Motorized)



Slide Lock Base Slat
(Manual)



Crank Pole



Strap Box



Wall Switch



Remote (HZ)



Battery (EZ)
(Motor)



Smart Home TaHoma (HZ)
(Motor)

EFFORTLESS CONTROLS

Classic manual operation or various advanced motorized solutions are available for seamless comfort and privacy, with motors and S/W Controls from Somfy and OZ Roll.

Crank Pole

Effortless and reliable manual shutter control with a cost-effective hand-operated mechanism.

Strap Box

A simple and economical manual control using a pull-strap for efficient shutter movement.

Wired Motor

Ensures consistent operation with a convenient wall switch. (standard & override)

Wireless Remote Motor (HZ)

Offers easy control at your fingertips. (Standard & Override)

Battery (EZ) Motor

Provides flexible, low-voltage battery operation to minimize wiring and maximize positioning choices.

Smart Home TaHoma (HZ)

Wireless connectivity with mobile device control from anywhere links into home automation systems.

Why Choose Us



AN ENTIRE COMPANY BUILT AROUND SECURITY-DRIVEN INNOVATION

We provide innovative products and unrelenting customer service, protecting what matters most.

THE PASSIONATE, SINGLE-MINDED MARKET LEADER



Superior Product



Fastest Lead Time



Ongoing Support



Customer-Focus

Personalized, attentive care from start to finish.



Innovation

Creative, unmatched solutions for the most demanding applications.



Integrity

Honest, responsible, and caring. We treat our customers and each other with respect.



Quality

Exceptional high-durability products and service. Unrelenting service and support.

RELATED INDUSTRY AFFILIATIONS



RELATED PRODUCTS



A Trusted Partner

With over 35 years of security product experience and more than 40,000 homes and retail locations protected by QMi, we have the skills to do the job right.

You can have confidence knowing that your family, assets, and property are well protected.

