

LX6 Commercial / CLEAR SHUTTERS

Clearly Secure, Strongly Defended



LX6 Shutters Provide a Clear Path to modern clarity in every view

SECURE YOUR SPACE



Counter



Storefront



Bars & Restaurants



Airports



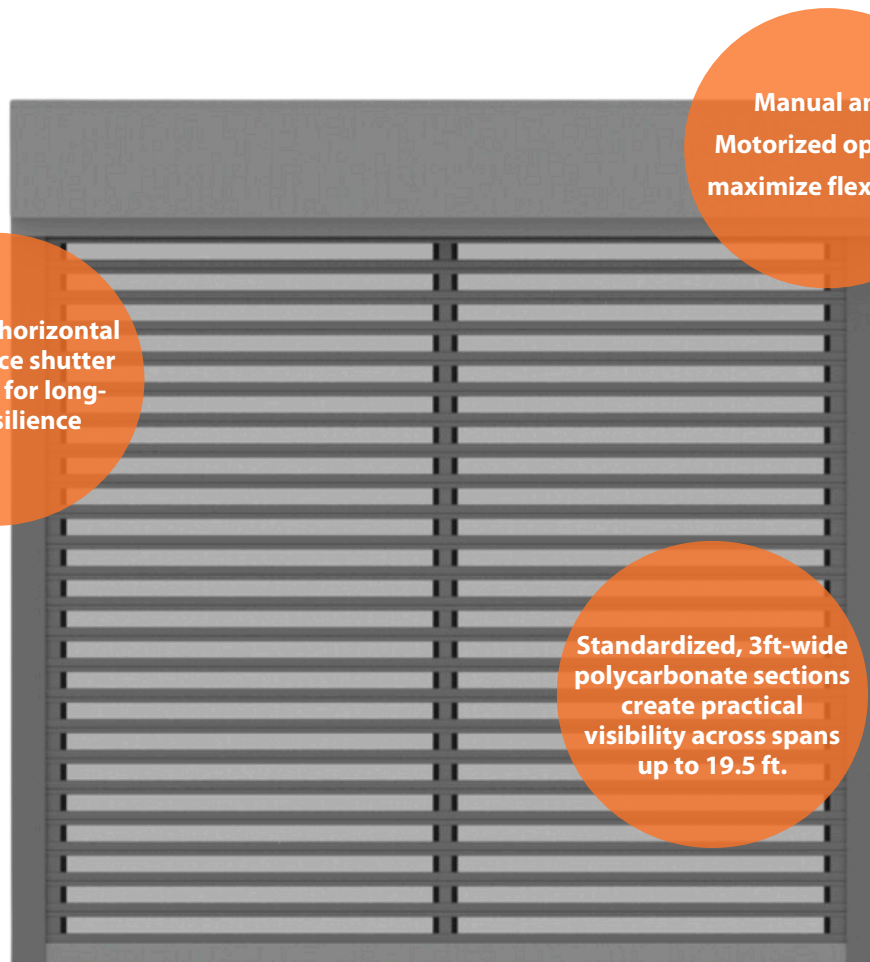
Stadiums

FEATURES

- Polycarbonate slats provide excellent visibility.
- Engineered couplers and vertical spacers create strength to thwart forced entry attack.
- Lightweight design for effortless operation.
- Attachable to existing walls or window mullions, perfect for retrofitting existing spaces.
- Spans widths up to 19 ft 6 in, with wide range of operators

OPTIONS

- Spring-assist or gear manual operation and tubular motor operation are available based on size and configuration. Jackshaft operator available for largest curtains.
- Wide range of lock options (manual) for your application.
- Housing, rail, and base slat color range available to match surrounding aesthetic.



Aluminum horizontal ribs enhance shutter durability for long-term resilience

Manual and Motorized options maximize flexibility

Standardized, 3ft-wide polycarbonate sections create practical visibility across spans up to 19.5 ft.

Clarity Delivered

CLEAR AND PREPARED

Seamlessly merge transparency with elegance through our LX6 clear shutters. Prioritizing optimal visibility, these feather-light shutters shield you from criminal threats and outside elements while inviting customers and generous amounts of light into your space.

- Unrivaled visibility fosters an atmosphere of openness, blending indoors and out.
- Elegant anodized finish complements nearly all aesthetics.



Clear polycarbonate panels offer excellent visibility and enhance the customer experience



LX6 shutters transform almost any opening, providing sophisticated security in outdoor spaces.

Durability Defined



Anodized aluminum horizontal couplers affords the shutters extraordinary resilience, promising long-term performance without sacrificing style.

RIGID, RESILIENT, & REASSURING

The LX6's anodized aluminum horizontal couplers and vertical spaces provide exceptional durability and robust construction, forming a steadfast barrier against intruders. This design merges aesthetics with resilience, ensuring long-term performance without compromise.

- Creates lightweight strength throughout the curtain.
- Absorbs, and dissipates, energy from attacks.
- Ensures consistent operation day-in and day-out.



Housing Shape & Control Options

HOUSING SHAPES

Various housing styles choices make it easy to match the aesthetics of your business.

Constructed from 3105-H12 alloy 0.034" thick 6063 - T6 aluminum available in 6", 6.5", 7", 8" and 10" sizes.



90° angle
(square)



45° angle



Round



LX6 Clear shown here cycle testing using a Jackshaft motor shown in the upper left.

CONTROLS

AL8 intro - replace

Manual Operation

- Manual operation for simplicity and cost.

Wired Motors

- Wall switch activation for day to day reliability.

Wireless Remote Motors

- Remote operation and integration with home automation systems.

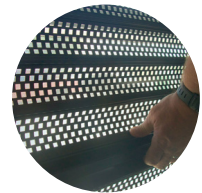
Jackshaft Motors

- Jackshaft operators for large shutters and above-ceiling installations provide reliable, durable control.

QMi partners with industry-leading motor manufacturers to offer the highest quality drive systems available.



Crank Pole



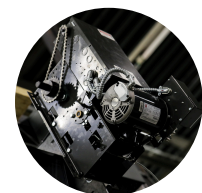
Spring Assist



Wireless Remote



Wall Switch



Jackshaft Motor

Lock & Color Options

LOCKS

Patented lock slat designs provide easy locking functionality across shutter use cases. Retractable mechanisms ensure a hassle-free installation and minimal upkeep, while the added felt and bulb seals at the base enhance protection and durability for your peace of mind.

Base Slat Thumbturn

- Base slat thumbturn or keyed lock for floor-level installations

Slide Lock

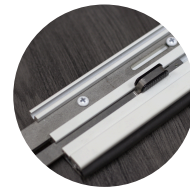
- Manual slide lock for window, counter, or new wall applications.

Lock Slat

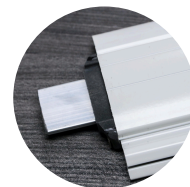
- General base slat that leverages motor brake to provide locking for entire curtain system.



Thumbturn Lock



Slide Lock



Motor Break

COLORS AND FINISHES

LX6 curtains (couplers, vertical spacers) are available in a luminous clear anodized finish, while additional colors and finishes are available for other components.

The versatile range matches or complements any architecture style.

Curtain



Clear Anodized Silver

Housing, Rails, Base Slats



Anodized



Beige



Bronze



Gray



Ivory



White



Custom

Contact your QMi Sales or Project Support Representative for pricing and lead times on custom color options.

Why Choose Us



AN ENTIRE COMPANY BUILT AROUND SECURITY-DRIVEN INNOVATION

We provide innovative products and unrelenting customer service, protecting what matters most.

THE PASSIONATE, SINGLE-MINDED MARKET LEADER



Superior Product



Fastest Lead Time



Ongoing Support

VALUES



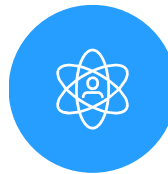
Customer-Focus

Personalized, attentive care from start to finish.



Innovation

Creative, unmatched solutions for the most demanding applications.



Integrity

Honest, responsible, and caring. We treat our customers and each other with respect.



Quality

Exceptional high-durability products and service. Unrelenting support.

RELATED INDUSTRY AFFILIATIONS



RELATED PRODUCTS



Front



Middle



Back

A Trusted Partner

With over 35 years of security product experience and more than 40,000 retail locations protected by QMi, we have the skills to do the job right.

You can have confidence knowing that your investment is well protected.

