

TR4 Transparoll® Commercial / CLEAR SHUTTERS

Crystal Clarity, Unyielding Protection



Providing Unparalleled, Secure Visibility

SECURING YOUR HIGHEST VALUE SPACES WITH MODERN APPEAL

The demand for clear, high-visibility shutter solutions is steadily increasing in the commercial property sector. These shutters offer a balance between security and aesthetics, making them ideal for protecting high-value openings such as storefronts, showrooms, and other high-traffic expanses.

One of the main advantages of clear shutters is their ability to maintain the visual appeal of a commercial property. Unlike traditional solid shutters, clear shutters allow passersby to see the activity within. This can be particularly beneficial for retail businesses that want to showcase their products or create a welcoming atmosphere. QMi TR4 Transparoll® provides seamless sightlines along its entire span, ideal for luxury visuals across many applications.

Made from strong, UV coated polycarbonate for resilience during physical attacks, the TR4 Transparoll® withstands repeated forced entry attempts and still stands tall.

As the demand for clear, high-visibility shutter solutions continues to grow, QMi continues to enhance its product line to offer even greater levels of security, aesthetics, and energy efficiency. Incorporate TR4 shutters as an essential component of your modern commercial property design to reliably and attractively protect key building openings.



TR4 shutters protecting outdoor restaurant with panoramic views.

It's no longer just about securing space, but leveraging limited spaces to create a unique and memorable brand experience.

—Forbes, Trends Reshaping Retail Real Estate, 2024

Natural daylight in commercial spaces improved performance of 20% of workers.

—Future Workplace Poll, Harvard Business Review, 2018



Open concept lobby areas require high-visibility security.



Airports and other high-traffic security areas demand clarity for passengers and security personnel.

TR4 Transparoll® Clear Shutters Redefine Security with High Clarity Resilience

SHIELD YOUR SITE



Airports



Banks



Bars & Restaurants

FEATURES

- Thick polycarbonate panels provide a smooth surface and prevent theft while maintaining maximum visibility.
- 250x more robust than glass made of the same thickness.
- Covers wide spans up to 18 ft in one continuous slat for uninterrupted views.
- Space-saving design with uniquely small roll-up coil.
- UV resistant for long-term aesthetic appeal.

OPTIONS

- A battery backup ensures reliable operation even in power outages, enhancing safety and peace of mind.
- The Emergency Release Device ensures a safe egress pathway.
- Clear (silver), black anodized or custom finish options available for a touch of bold elegance added to your space.



Space saving
compact coil rolls up
above ceiling for
low - headroom
installations

Full-width, clear
polycarbonate slats
create an inviting
atmosphere for
guests while also
safeguarding your
space

Crystal-Clear Confidence

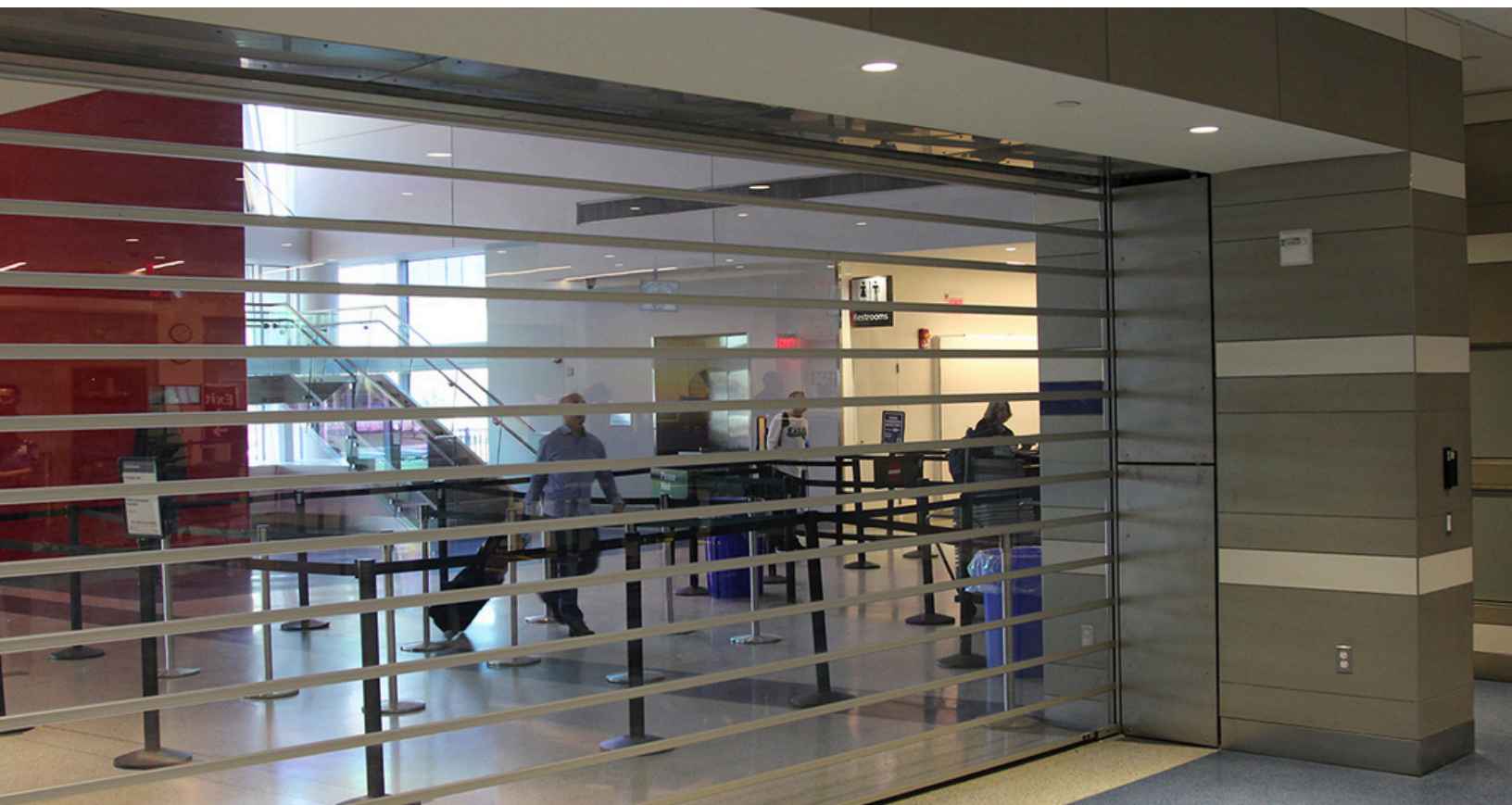
TRANSPARENT AND TRUSTED

Illuminate your business interiors with the unmatched clarity of TR4 shutters. Designed to keep your business enticingly visible and safeguarded, they provide a transparent security wall that doesn't obstruct views or compromise aesthetics.

- Enhances business visibility and appeal, day or night.
- Blends into your building structure, with integrated rails and above ceiling wrap.
- Slats and couplers combine to provide resilience against attacks.



TR4's polycarbonate panels provide clear views along their entire length.



Passenger area at major U.S. International airport.

Elegant Tenacity



Thick polycarbonate panels, with resilient solid guides shown here, resist heavy impact from aggressive criminal attacks.

SECURE AND SEAMLESSLY TAILORED

TR4 Transparoll® shutters empower your space with lasting security to protect what matters most.

- Rails and wrap incorporated into architecture, blending seamlessly with space.
- Expansive slats have no vertical spacers, providing clear, uninterrupted views.
- Precision interface between slat and coupler ensure security and durability over time.
- UV resistance ensures polycarbonate clarity and color over time.



Black anodized TR4 provides striking security complement to this lobby area.

Expansive Adaptability



Base slat bottom plate can be tailored to hide ceiling opening when shutter is open.

VERSATILE AND VENERABLY EFFICIENT

TR4 shutter is crafted to adapt, bringing versatility that architects and construction professional crave.

- Space-saving wrap design ensures soffit efficiency.
- Base slat plate covers ceiling openings seamlessly.
- Rail design provides strength and sleek integration into walls for integrated look.



TR4 Transparoll® protects indoor and heavy traffic areas.

Control and Color Options

CONTROLS

TR4 operates using a jackshaft motor, a reliable battery backup for power outages, and an Emergency Release Device for assured safe egress. All controls are designed to provide seamless security and operational ease.

Jackshaft Motor

- Jackshaft motors in standard, gear, and variable frequency (VFD) to provide seamless operation.
- Wall switch activation for day-to-day reliability. (standard or keyed)



Jackshaft Motor
(Ref)



Wall or Key
Switch

Battery Backup

- Maintains shutter operation during power outages, ensuring uninterrupted functionality.



Battery Backup



Emergency Release Handle

Emergency Release Device (ERD)

- Code-compliant emergency egress to ensure safety in the event of power failure.

COLORS

TR4 Transparoll® shutters come in two (2) standard anodized finishes with custom colors available for a bold, elegant touch.



Clear Anodized
(Silver)



Black Anodized



Custom

Contact your QMi Sales or Project Support Representative for pricing and lead times on our custom Black option.

Case Study: Crystal Clear Bank Security

OVERVIEW

A leading national bank chain sought a highly secure and aesthetically pleasing solution to protect their bank lobbies and ATM areas. They needed a system that could deter criminals, maintain a welcoming atmosphere for customers, and work within a small footprint to maximize architectural flexibility.

QMi TR4 Transparoll® shutters were selected to meet the bank's specific requirements. These transparent, roll-up shutters offer exceptional security, durability, and visibility. They are designed to withstand forced entry attempts and provide a clear view of the interior, ensuring customer safety and peace of mind. Their unbroken, clear sightlines and integrated wall / ceiling mounting maximize architectural appeal at the branches.

QMi worked closely with the bank's architects to ensure a seamless integration of the TR4 Transparoll® shutters into the overall building design. The shutters were custom-engineered to match the existing architectural style and blend seamlessly with the surrounding environment. Plans were developed to scale the solution across a wide range of branch designs.

By selecting TR4 Transparoll shutters, the bank chain was able to achieve its goal of providing a highly secure and aesthetically pleasing environment for its customers. The highly-efficient slat wrap design of TR4 delivered the installation flexibility the architects needed to scale the solution broadly across sites.



Unobstructed views in a bank lobby from any angle.



Corner installation ensures panoramic views with easy-to-reach Egress handles.



Multi-sided lobby installation maximizes sense of openness .

Why Choose Us



AN ENTIRE COMPANY BUILT AROUND SECURITY-DRIVEN INNOVATION

We provide innovative products and unrelenting customer service, protecting what matters most.

THE PASSIONATE, SINGLE-MINDED MARKET LEADER



Superior Product



Fastest Lead Time



Ongoing Support



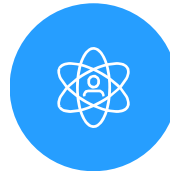
Customer-Focus

Personalized, attentive care from start to finish.



Innovation

Creative, unmatched solutions for the most demanding applications.



Integrity

Honest, responsible, and caring. We treat our customers and each other with respect.



Quality

Exceptional high-durability products and service. Unrelenting support.

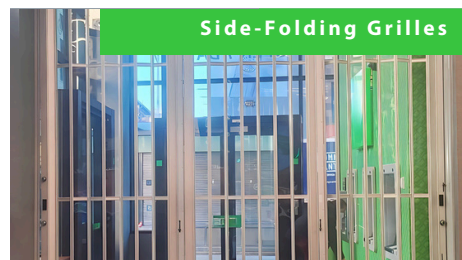
RELATED INDUSTRY AFFILIATIONS



RELATED PRODUCTS



Front



Middle



Back

A Trusted Partner

With over 35 years of security product experience and more than 40,000 retail locations protected by QMi, we have the skills to do the job right.

You can have confidence knowing that your investment is well protected.

