

Stylish Security For Expansive Spaces



Protecting the Widest Openings with Strength and Style

INTEGRATING SECURITY INTO YOUR OPEN-CONCEPT SPACE

Wide openings in retail and commercial architecture has created a need for innovative security solutions. QMi XL shutters offer a versatile and effective way to protect counter areas, interior openings, and storefronts without compromising the desired aesthetic.

Counter Areas: In counter areas, XL shutters can secure cash registers, point-of-sale systems, pharmaceuticals, and other valuable items. Their wide coverage area and easy motorized operation provide a reliable deterrent to theft and make them easy for employees to use.

Interior Openings: XL shutters can create secure access points between different building areas. This is particularly important for high-value inventory or sensitive areas. They can also control access and provide added security.

Storefronts: XL shutters can protect storefronts from forced-entry attacks. Installed internally, they can efficiently and safely cover extremely large storefronts. Their flexible installation approach ensures solid aesthetics that complement the building's architecture.

QMi XL shutters offer a versatile and effective solution for securing wide openings in retail and commercial spaces.



XL shutters protect the opening of a pharmacy counter.

Every healthcare center has to double down on their patient experience...

—Wolters Klorer, *Changing Role of Retail Pharmacy, 2024*

It's no longer just about securing space but leveraging limited spaces to create a unique and memorable brand experience.

—Forbes, *Trends Reshaping Retail Real Estate, 2024*



Architects favoring open, expansive spaces to engage high-end retail consumers.



Modern pharmacies experimenting with more open spaces requiring security.

XL Shutters Provide Expansive Coverage and a Swift Installation, ideal for the Modern Business

FORTIFY YOUR FACILITY



Countertop Security



Pharmacies



Storefront

FEATURES

- Versatile security solution offering expansive coverage for spaces with larger openings.
- Uniquely small box housing enhances aesthetics while providing robust protection.
- Perforated slats for visibility without sacrificing security.
- Designed for a quick and easy installation.

OPTIONS

- Tubular motor for smooth, reliable operation or jackshaft motors for extreme widths.
- Custom sizes and colors to meet opening requirements.



Tubular Motor operation provides a quiet, space-optimized user experience.

Uniquely small housing adds sophisticated style to your interior space

Solid or punched slats tailor the XL for your desired visibility level.

Unparalleled Widths

BROAD SECURITY

XL Shutters cover extra-wide openings with a small, aesthetically pleasing housing, uniquely designed for quick and easy installation below ceilings. Ideal for countertop applications, pharmacies, and retail spaces with large indoor openings, they provide security no one else can match.

- Covers extra wide openings up to 30 ft. providing a versatile solution for the widest openings in a compact package.
- Tubular motor operation for widths up to 26 ft., the system enables smooth, reliable, and quiet operation. For 26-30 ft. openings, high performance jackshaft motors are available.



XL shutters are designed to cover the widest spans for ultimate versatility.



Open retail spaces like the entrance to this mall department store utilize XL shutters for their wide spanning security.

Appealing Aesthetics



SLEEK, SEAMLESS AND STUNNINGLY STYLED

Whether for interior openings or storefronts, our XL Wide Shutters deliver performance without taking up valuable architectural headroom.

- Uniquely small and visually appealing finished housing allows for large shutter installation below ceilings, reducing costs and simplifying fieldwork.
- Cover single or multiple openings with the same large shutter.

XL shutter saves room while adding sophisticated style to your space.



XL shutters securing boat storage showroom at national sporting goods chain.

Housing, Control, and Lock Options

BOX HOUSING

QMi housings make it easy to match your business's aesthetics. XL shutter's 45° angle housing is constructed from 3105-H12 alloy, 0.034" thick 6063 - T6 aluminum, 12 in.



45° angle

CONTROLS

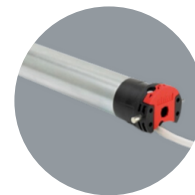
We offer specialized control options to meet your unique installation needs. Tubular motors minimize headroom and size requirements and come in a standard box housing. Jackshaft motors, for extremely large openings, come in custom housing or are installed above ceilings.

Tubular Motor with Standard Housing

Wall switch activation for day-to-day reliability.

Jackshaft Motor

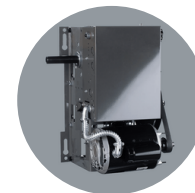
High-performance wall switch for heavy-duty activation.



Tubular Motor



Wall or Key Switch

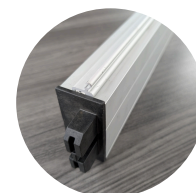


Jackshaft Motor

LOCKS

Motorized controls are paired with a re-inforced base slat for strength and stiffness at the bottom of the wide curtain.

Motor brake is used to provide locking for the entire system.



Re-inforced Base Slat

Slat and Color Options

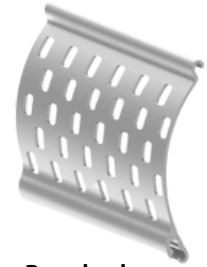
SLATS

Perforated slat design for robust security with high visibility. Our punched XL slats offer substantial visibility, showcasing your merchandise effectively while maintaining superior security.

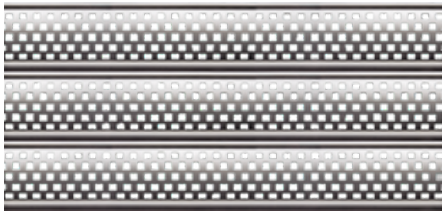
Available in three (3) patterns.



Solid



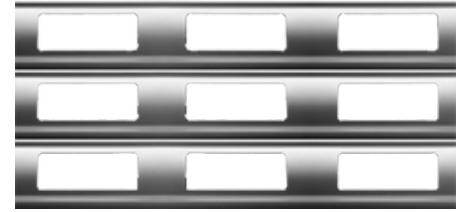
Punched



P51



P21



P11

Note: P11 and P21 limited width configurations.

COLORS

We offer selective colors in our XL line, designed to complement architectural needs of wide openings. Hybrid / multi-color options can be configured.



White



Clear Anodized
(Silver)



Custom

Contact your QMi Sales or Project Support Representative for pricing and lead times on custom color options.

Case Study: Large Pharmacy Protection

OVERVIEW

A national chain pharmacy had a store in a high-crime area that was experiencing a significant increase in thefts and jumpers targeting the pharmacy counter. The open counter design made it easy for criminals to access prescription medications and existing security methods were cumbersome for employees to use.

As part of a store remodel, the pharmacy implemented XL shutters as a protective barrier in front of the pharmacy counter. The easy-to-use motorized solution allowed the pharmacists to secure the counter areas efficiently while maintaining the open and inviting ambiance of the area.

The installation of XL shutters in the at-risk pharmacy eliminated the thefts. The shutters acted as a physical deterrent to criminals while providing a sense of security for both employees and customers, improving the overall shopping experience. The location was able to protect its valuable inventory, eliminate losses, and create a safer environment for everyone at the store.



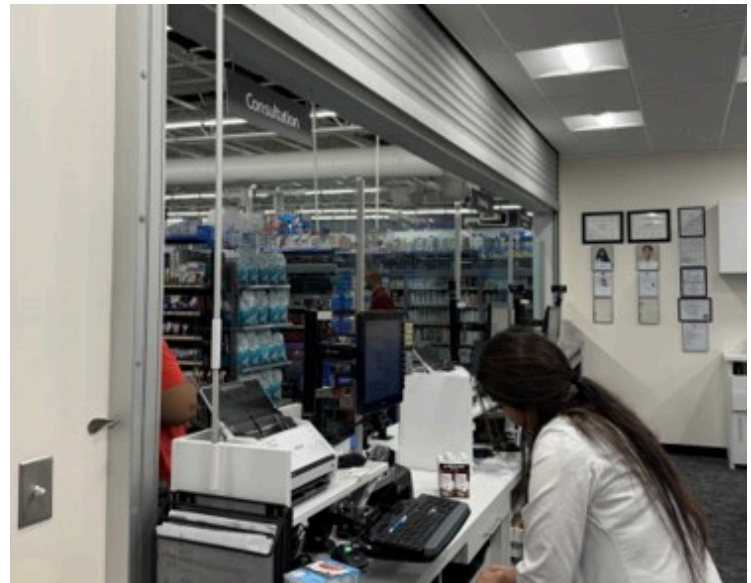
Step 1: XL integrated into pharmacy remodel along with other construction.

"We're very happy with our QMi Shutters. The installation crew was very friendly and efficient, and our staff feels safer than ever."

—STORE ASSOCIATE



Step 2: XL validated and ready for cabinetry install.



Step 3: Pharmacist supports customer at a finished pharmacy counter. XL blends seamlessly into overall work pharmacy operations.

Why Choose Us



AN ENTIRE COMPANY BUILT AROUND SECURITY-DRIVEN INNOVATION

We provide innovative products and unrelenting customer service, protecting what matters most.

THE PASSIONATE, SINGLE-MINDED MARKET LEADER



Superior Product



Fastest Lead Time



Ongoing Support



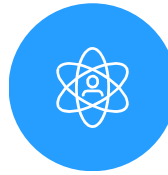
Customer-Focus

Personalized, attentive care from start to finish.



Innovation

Creative, unmatched solutions for the most demanding applications.



Integrity

Honest, responsible, and caring. We treat our customers and each other with respect.



Quality

Exceptional high-durability products and service. Unrelenting support.

RELATED INDUSTRY AFFILIATIONS



RELATED PRODUCTS



Front



Middle



Back

A Trusted Partner

With over 35 years of security product experience and more than 40,000 retail locations protected by QMi, we have the skills to do the job right.

You can have confidence knowing that your investment is well protected.

