

Commercial / SECURITY SCREENS

# Shield Your Business



# Securing Critical Facilities from Rising Threats

## KEEPING YOUR BUSINESS SAFE IN AN UNCERTAIN WORLD

In an era of escalating crime rates and increasingly unpredictable weather patterns, the protection of commercial and municipal buildings has become a top priority. QMi Stainless Steel Security Screens offer a comprehensive solution to safeguard schools, state and local municipal facilities, and commercial businesses against both criminal threats and extreme weather events.

QMi Security Screens are engineered to deter intruders, providing a formidable physical barrier against vandalism and forced entry. Their durable design and ease of installation makes them a reliable choice for a wide range of building types.

In addition to crime prevention, QMi screens are also designed to withstand the severe weather events besetting coastal regions. Their hurricane-rated construction provides protection against high winds and debris, helping to mitigate property damage and ensure business continuity.

Screens are an important tool in a layered security strategy for commercial buildings. Their versatility and cost effectiveness make them a strong choice to protect communities and safeguard critical infrastructure.



QMi security screens protecting windows at an elementary school.

**In 2023, U.S. businesses faced an 8% increase in burglary and break-in incidents (FBI Crime Statistics, 2023).**

—FBI Crime Statistics, 2024

**We are investing in things like perimeter control, signage, and access control [in our schools]**

—NPR Morning Edition, How Private School Security Changed in Tennessee, 2024



The shattered remains of a storefront post smash-and-grab spree, highlighting the vulnerability of unprotected businesses.



Increasing investment and focus on school security measures.

# QMi Stainless Steel Security Screens Provide Robust Protection with Uncompromising Views

## PROTECTION WHERE YOU NEED IT



Municipal Buildings



Cannabis Dispensaries



Schools



Manufacturing



Warehouse



Retail

## FEATURES

- Woven high-tensile 304-grade stainless steel wire mesh secures occupants and provides clear exterior vision.
- Low-profile fixed screen frames maintain architectural design and aesthetics.
- Allow natural light and airflow into your building.
- Hurricane-approved protection for added peace of mind.

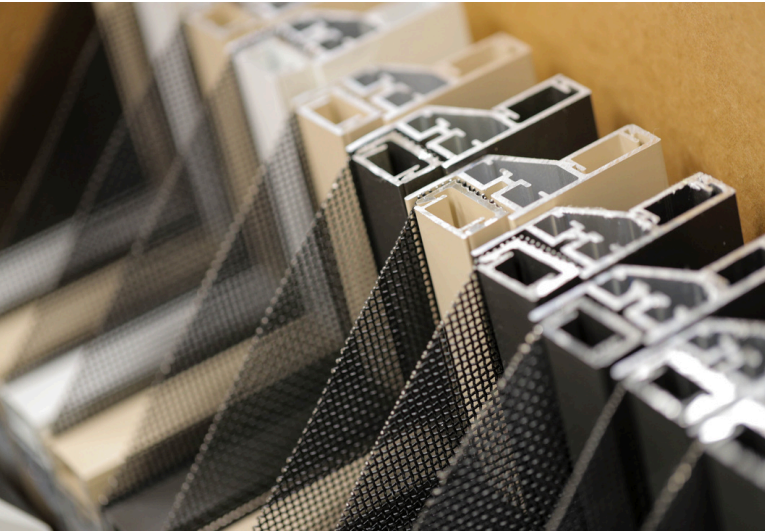
## OPTIONS

- Operable egress option for emergency exits.
- Available in 3 different frame colors.
- Custom shapes available to match nearly any opening. (fixed)

High-tensile 304 stainless steel mesh ensures safety with clear exterior visibility

Aluminum frame blends with building designs, providing strong security and low visual impact

# Secure, Subtle Elegance



Screen frame samples.

## SLEEK, SECURE AND SEAMLESSLY TAILORED

Designed for durability, the low-profile aluminum frame fits building contours. It is fabricated to integrate with a building's design while providing maximum security and minimal visual impact.

- Compact, space-saving frames combine strength with architectural appeal.
- Frame locking mechanisms secure mesh into a robust forced entry barrier against threats.



Fixed screens secure multi-pane, curved, sidewalk-adjacent windows at a California business.

# Superior Strength

## UNYIELDING STAINLESS STEEL MESH

Our screens combine exceptional strength frames with security-grade architectural black mesh. Heavier and more durable than fabric or other metal options, the mesh effectively repels flying debris and aggressive attacks to ensure robust protection for occupants.

- High-tensile 304-grade stainless steel withstands tool and manual forced entry attacks.
- Using architectural-grade coatings, our black mesh resists weathering and discoloration over time.

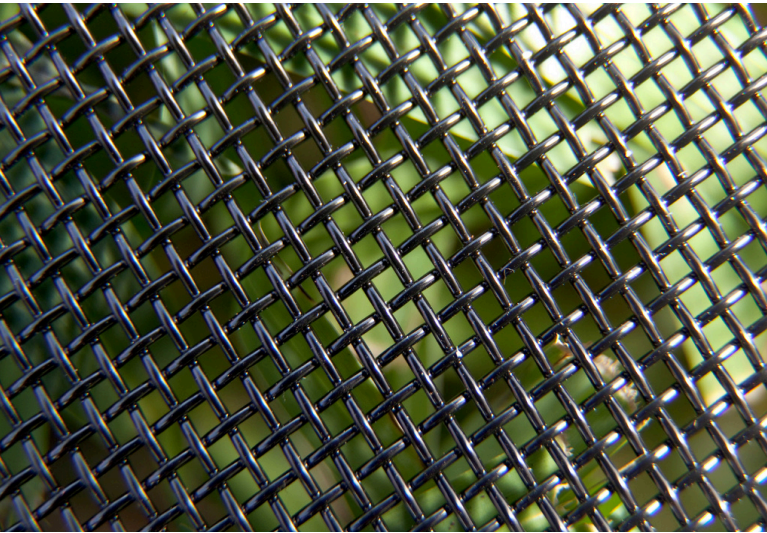


High-tensile 304-grade stainless steel mesh shown up close.



Manufacturing facility with screens on side openings.

# High-Visibility



View through our high-tensile 304-grade stainless steel mesh.

## ROBUST SECURITY, UNCOMPROMISED VIEWS

Our fixed window screens ensure practical visibility while safeguarding your space. The always-black mesh is designed for optimal clarity, allowing occupants to see through effortlessly.

- Offers the perfect balance of strength and transparency, ensuring security without compromising on visual access.
- Experience filtered light blending visibility and shading.



Comparable views through screens and clean, uncovered glass.

# Operable Egress

## SAFE, FLEXIBLE, STRONG ESCAPE SCREENS

Equipped with a panic bar for emergency exits, QMi Egress screens offer robust protection for commercial buildings, ensuring the safety of occupants and visitors.

- Panic bars enable rapid, safe exits for emergency situations in commercial buildings.
- Hinge and lock mechanism provide easy egress while maintaining security.
- Egress compliant with federal, state, and local laws.



Egress screens are easily opened using the panic bar.



Hinges tested to meet hurricane, security, and durability requirements for worry-free operation.

# Frame Shapes

## FRAME SHAPES

Our custom-built frames, adaptable to shapes like arches, polygons, or unique designs, enhance your building's security and aesthetic appeal.



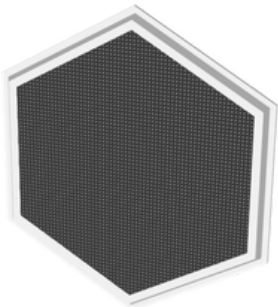
Our custom frames, tailored to a variety of shapes, provide both protection and style.



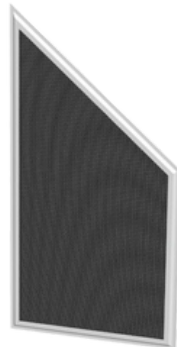
Arch



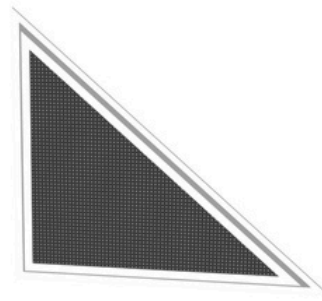
Round



Hexagon  
(Ref)



Polygon  
(Ref)



Triangle  
(Ref)

## COLORS

Choose from a variety of frame color options that cohesively blend with your business's aesthetics.



White



Bronze



Beige



Custom

Contact your QMi Sales or Project Support Representative for pricing and lead times on custom color options.



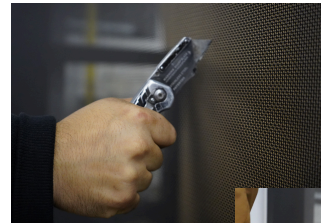
# Tested to the Strictest Standards

QMi stainless steel security screens pass forced entry security testing requirements.

They also meet the strict standards for hurricane approval.

- Florida Building Code (FBC) compliant (HVHZ and Non-HVHZ)
- Texas Department of Insurance (TDI)

Confidently Secure Your Commercial Property.



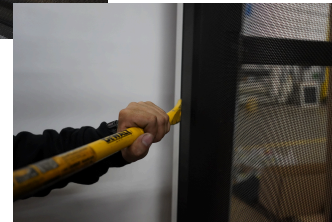
Knife Sheer Test



Impact Test



Large Missile Hurricane

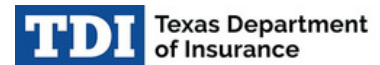


Jimmy/Pry Test

## Certifications



(HVHZ & non-HVHZ)



(3rd Party Evaluation)

*Note: Testing in accordance with TAS 201/202/203 and ASTM E330/E1886/E1996 Missile Level D*

## Industry's Best Warranty\*



*\* Applies to commercial applications only and customers who follows Use and Care guidelines.*

# Case Study: Police Precinct

## OVERVIEW

A police precinct in Texas was facing increasing security threats to the site and concerns about hurricane preparedness. The precinct's existing security measures were inadequate to protect the building and its occupants from potential breaches and natural disasters.

The precinct decided to implement a comprehensive security solution using QMi Stainless Steel Security Screens. These screens were chosen for their durability, strength, and resistance to corrosion, making them ideal for the harsh Texas climate.

QMi installed fixed screens on the upper levels of the building, providing a robust barrier against vandals,

high winds and debris, offering valuable protection during hurricanes.

On the lower levels, QMi Egress Screens were installed. These screens allowed for easy evacuation during emergencies while still providing a secure perimeter. The egress screens were equipped with quick-release mechanisms, ensuring rapid access in case of danger.

Stainless steel security screens have significantly enhanced the precinct's security posture. They have provided a reliable and durable solution to the precinct's security and hurricane protection needs, ensuring the safety and well-being of the officers and the community they serve.



Fixed Screens protect upper levels of precinct.

*"We are very happy with our screens so far. They've met all of our needs."*

— Precinct Security Officer



Egress screens installed on back, ground level windows per code.

# Why Choose Us



## AN ENTIRE COMPANY BUILT AROUND SECURITY-DRIVEN INNOVATION

We provide innovative products and unrelenting customer service, protecting what matters most.

## THE PASSIONATE, SINGLE-MINDED MARKET LEADER



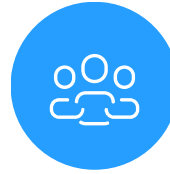
### Superior Product



### Fastest Lead Time



### Ongoing Support



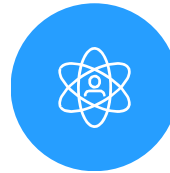
### Customer-Focus

Personalized, attentive care from start to finish.



### Innovation

Creative, unmatched solutions for the most demanding applications.



### Integrity

Honest, responsible, and caring. We treat our customers and each other with respect.



### Quality

Exceptional high-durability products and service. Unrelenting support.

## RELATED INDUSTRY AFFILIATIONS



## RELATED PRODUCTS



Front



Middle



Back

# A Trusted Partner

With over 35 years of security product experience and more than 40,000 retail locations protected by QMi, we have the skills to do the job right.

You can have confidence knowing that your investment is well protected.

