

Qcompact Residential / SECURITY SHUTTERS

Fortify Your Home Against Threats



Protecting Homes from Burglary and Intruder Attack

DETER CRIMINALS, SAFEGUARD WHAT MATTERS MOST

In recent years, residential crime rates have been on the rise in many communities, making home security a top priority for homeowners. Burglars are becoming increasingly sophisticated, seeking out vulnerable properties and employing advanced techniques to gain entry.

Rising residential crime rates are making home security a top concern for homeowners. Burglars are using increasingly sophisticated tactics, prompting the need for effective protection. QMi Qcompact security shutters offer a strong defense against break-ins. As the strongest shutters available, they're designed to resist even the most determined forced entry attempts.

These shutters act as a clear deterrent to potential intruders. Their robust construction and reinforced design make gaining entry a challenge, providing peace of mind for you and your family.

Beyond security, Qcompact shutters enhance your home's curb appeal. Available in various styles and finishes, with a discreet box housing, they seamlessly integrate with any exterior design. Enjoy both heightened security and a stylish home with QMi Qcompact security shutters.



A strong defense against crime, Qcompact security shutters are designed to withstand even the most determined forced entry attempts.

Every 26 seconds, a home burglary occurs in the U.S., approximately 3,060 per day.

—Forbes Home, 2024

Average cost of home burglary is \$2,700, and increases insurance rates by 20%.

—(FBI, Google Consumer Surveys [The Zebra], 2024)



Home invasions and violent crime risk on the rise in many communities.



Security shutters signal to criminals that a home is protected, often causing them to move on to softer targets.

Commercial Grade Strength Meets Residential Beauty in One Seamless Shutter

REINFORCE YOUR RESIDENCE AND ENJOY UNCOMPROMISED SAFETY



Home Security



Weather Protection

Smallest shutter box in the industry across all motorized and manual models minimizes visible footprint

Patented snap cover rail design provides a smooth, clean appearance.

Optimized hinge and end retention increases durability.



FEATURES

- A precision-engineered system with unrivaled strength.
- Space-saving design with the industry's smallest box.
- Designed for reliably smooth, quiet operation.
- Enhanced slats and hinges for greater durability.
- Wide maximum spans to cover larger home openings.

OPTIONS

- Versatile housing styles for your home.
- Patented lock slat designs for a variety of use cases.
- Manual and motorized operators for any opening type.
- Mounts to various substrates in a range of configurations.
- Standard and custom color finishes are available.
- Virtual assistant compatibility.

Unrivaled Strength

ROBUST, REFINED, AND BUILT TO LAST

Achieve commercial-grade protection without sacrificing aesthetics. Qcompact shutters meld strength and elegance, elevating your property's allure while ensuring security.

- Integrated components work in harmony to form the strongest shutter on the market.*
- Commercial-grade security while preserving your home's beauty.
- Patented rail and slat system ensures optimum strength and peak performance for years.
- Highly-engineered end-retention secures slat system.



Thick slats contribute to Qcompact's unmatched strength, to thwart active threats.

**Based On Pull-Apart Load and Sledge Hammer Testing.*



Qcompact shutters protecting wide home openings from threats.

Enduring by Design



Compact slats being carefully laced in our factory.

DURABLE, DEPENDABLE, AND DEFIANT

Unmatched durability ensures your shutters withstand the elements and time. Every detail, from materials to hinge design, is meticulously crafted for ultimate resilience.

- Optimized wrap and engineered fasteners ensure a scratch-free finish.
- Enhanced hinge backband for optimal resilience and reduced risk of water and sand infiltration.
- Refined system tolerances to ensure smooth operation over thousands and thousands of cycles.
- Highest quality aluminum construction with high resilience finishes.



Compact shutters protecting a home's critical access points.

Aesthetic Brilliance

EVERLASTING SECURITY, STYLISHLY DELIVERED

Ingenious design merges sleekness with functionality, ensuring your shutters look good and secure seamlessly.

- 12 uniquely-sized slats ingeniously nested together for strength and performance.
- Patented nesting and hinge design shrinks wrap size, minimizing housing dimensions.
- Innovative snap cover system conceals fasteners, presenting a flawless, polished exterior.
- Contemporary colors to match any decor.



The elegant and tightly nested Qcompact roll sets the standard for superior security with a charming appeal.



Even from the interior, Qcompact shutters can compliment a home's appeal.

Seamless Functionality



The instinctive finger pull paired with a mid-curtain lock makes operating and locking manual Qcompact shutters absolutely effortless.

QUIET, QUAIN, AND QUALITY DRIVEN

Seamlessly integrate our quiet, efficient shutter system into your daily life. Crafted with precision, our shutters blend superior functionality with intuitive features, ensuring effortless use and enhanced security.

- Bushing-guides roll smoothly in industry-strongest rails.
- Intuitive finger pull coupled with a mid-curtain lock enhances user experience in manual operation.
- Range of motorization options delivers consistent performance.



Qcompact shutters are designed to blend seamlessly into your daily life, providing superior security without sacrificing convenience.

Adaptable Installation

VERSATILE AND VASTLY FLEXIBLE

Marry precision with versatility in every installation. The epitome of tailored fit and function, Qcompact offers a palette of configurations that harmonize security with your home's design.

- A broader range of adaptive configurations accommodates diverse home openings.
- Generous max span up to 236 in. width (19 ft, 6 in.) or 288 in. height (24 ft)
- Pre-drilled rail holes on both walls facilitate a swift, streamlined installation with precise spacing for hurricane compliance.
- Snap cover fits snugly over hole-track for clean appearance.



Rail holes pre-drilled for an effortless installation.



Qcompact hurricane shutters offer a tailored fit, designed to match your home's unique style while providing maximum security.

Housing and Control Options

HOUSING SHAPES

Housing style choices make it easy to match the aesthetics of your residence.

Box Housing

Constructed from 3105-H12 alloy 0.034" thick 6063 - T6 aluminum in 6, 6.5, 7, 8 and 10 in. sizes



90° angle
(square)



45° angle



Round

CONTROLS

Manual and motorized choices, both standard and override, provide effortless operation.

Manual Operation (Spring-Assist or Gear)

Cost-effective, spring-assisted push up/pull down or crank pole (gear) systems.

Wired Motor

Convenient wall switch activation for day-to-day reliability, either single- or multi-shutter control. Standard or override. Line Voltage.

Battery Motor (EZ)

Provides flexible, low-voltage battery operation to minimize wiring and maximize positioning choices.

Wireless Remote Motor (HZ)

Remote operation provides flexibility across your home. Standard and override. Line Voltage.

Smart Home TaHoma™ (HZ)

Remote operation provides flexibility across your home.



Spring Assist



Crank Pole
(Manual)



Line Voltage
Wall Switch



Low Voltage
Battery



Wireless Remote



TaHoma Hub

QMi partners with industry-leading motor manufacturers like Somfy and OZ-Roll to offer the highest quality drive, software, and control systems.

Easily connect to Google Assistant, Alexa, & more



Lock and Color Options

LOCKS

Our locking slat options offer a secure fit for any opening, with QMi's patented designs catering to your needs. Our retractable mechanisms simplify installation and upkeep, and our felt and bulb seals ensure a polished finish and strong performance in extreme weather conditions.

Base Slat Thumbturn

- Stand-alone or paired with mid-curtain lock.
- Center or off-center (custom) placement to meet application needs.
- Weather resistant mechanism for coastal environments.

Slide Lock

- Easy-to-use slide mechanism.
- Robust security for window applications.

Mid-Curtain Lock

- Light-weight, easy-to-use lock as stand-alone or paired with a base slat thumbturn.
- Centered or off-center (custom) placement to meet application needs.

Motor Brake

- Motorized shutters leverage the motor brake to provide locking for entire curtain.
- High-strength base slat extrusion provides weight and stiffness.



Base Slat Thumbturn



Slide Lock



Mid-Curtain Lock



Motor Brake

COLORS

Powder coat and wet paint options for both standard and custom colors are available.



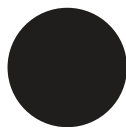
Clear Anodized
(Silver)



Black Anodized



Beige



Bronze



Gray



Ivory



White



Custom

Contact your QMi Sales or Project Support Representative for pricing and lead times on custom color options.

Tested to the Strictest Standards

COMPACT SHUTTERS MEET THE STRICT STANDARDS FOR HURRICANE APPROVALS.

- Florida Building Code (FBC) (HVHZ & non-HVHZ)
- Texas Department of Insurance (TDI)
- Miami-Dade County Notice of Approval (NOA)

Confidently secure your home from the strongest hurricanes.



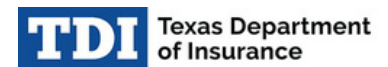
Certifications



(HVHZ & non-HVHZ)



(NOA)



(SHU)

Note: Testing in accordance with TAS 201/202/203 and ASTM E330/E1886/E1996 Missile Level D

Industry's Best Warranty*



** Applies to residential applications only. And homeowners who follows Use and Care guidelines.*

Case Study: Suburban Security

OVERVIEW

A homeowner in a quiet suburban neighborhood was becoming increasingly concerned for their safety after hearing about a series of home robberies in the area. They realized the urgent need for enhanced home security and wanted a solution that would not only deter criminals and provide the peace of mind that would allow them to sleep soundly at night, but that also wasn't an eye sore.

QMi offered Qcompact residential security shutters as a comprehensive security solution. The shutters were installed on all exterior doors and windows, providing a strong physical barrier against potential intruders.

The Qcompact shutters provided enhanced security immediately. Acting as a powerful visual deterrent to criminals, the shutters made it significantly more difficult for any would-be intruder to gain entry into the home if anyone were to try.

The shutters also seamlessly integrated with the home's exterior, enhancing its overall appearance and curb appeal. It was a win-win for the homeowner who was very pleased with the aesthetics of the shutters.



Exterior mounted Qcompact shutters were installed over various openings to bolster the security of the home's rear.



Qcompact had this homeowner covered, and it was clear to would-be intruders that this home was protected.



The motorized Qcompact shutters allowed the convenience of remote operation from anywhere inside or outside the home.

"I'm so grateful that I installed Qcompact shutters. They've made me feel much safer in my home, and I've recommended them to several neighbors looking to enhance their home's security."

— HOMEOWNER

Why Choose Us



AN ENTIRE COMPANY BUILT AROUND SECURITY-DRIVEN INNOVATION

We provide innovative products and unrelenting customer service, protecting what matters most.

THE PASSIONATE, SINGLE-MINDED MARKET LEADER



Superior Product



Fastest Lead Time



Ongoing Support



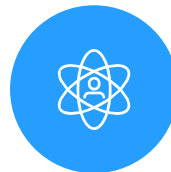
Customer-Focus

Personalized, attentive care from start to finish.



Innovation

Creative, unmatched solutions for the most demanding applications.



Integrity

Honest, responsible, and caring. We treat our customers and each other with respect.



Quality

Exceptional high-durability products and service. Unrelenting service and support.

RELATED INDUSTRY AFFILIATIONS



RELATED PRODUCTS



A Trusted Partner

With over 35 years of security product experience and more than 40,000 homes and retail locations protected by QMi, we have the skills to do the job right.

You can have confidence knowing that your family, assets, and property are well protected.

