

# Safeguard Your Home Sanctuary



# Reinforcing Home Safety, Shutting Out Intruders

## PROTECTING HOMES FROM BURGLARY AND EXTREME WEATHER EVENTS

In an era of escalating climate change, hurricanes have become more frequent and intense. At the same time, residential crime rates have been on the rise in many communities, making home security a top priority for homeowners. In this uncertain environment, homeowners are looking for effective solutions to protect their property from **both threats.**

QMi Hurricane and Security Screens are engineered to deter intruders, providing a formidable physical barrier against vandalism and forced entry. Their durable design and ease of installation makes them a reliable choice for your home.

In addition, QMi screens are also designed to withstand the rigors of severe weather events besetting coastal regions. Their hurricane-rated construction provides protection against high winds and debris, helping to mitigate property damage and ensure business continuity. Versatile custom shapes, easy installation, and cost effectiveness make them a strong choice to protect your home and safeguard your family.

Whether you're looking to protect your home from burglars or simply enhance its appearance, QMi Hurricane and Security Screens are an excellent choice.



Security screens protect the windows of a home's back porch.

**Every 26 seconds, a home burglary occurs in the U.S., approximately 3,060 per day.**

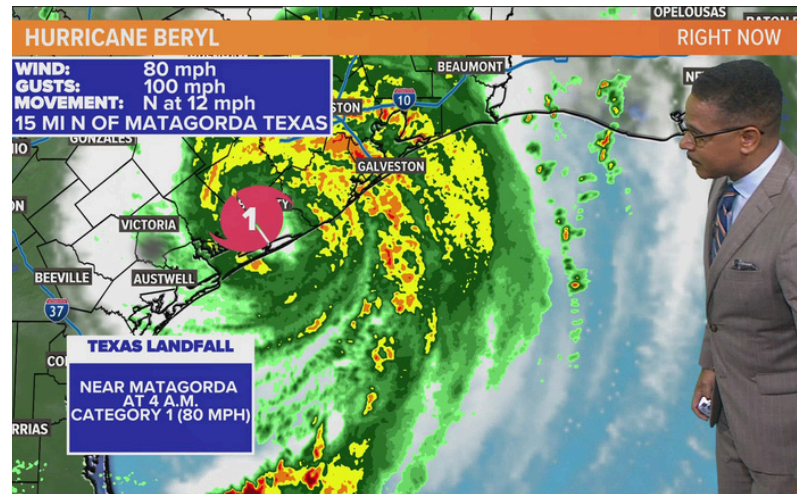
—Forbes Home, 2024

**6 of 10 most active hurricane seasons on record have occurred in the last 20 years.**

—The Weather Channel, 2024



Security screens signal to criminals that a home is protected, often causing them to move on to softer targets.



Storms continue to strengthen, occur more frequently, and bring destruction to coastal communities in the South and East.

# QMi's Residential Security Screens Offer Hurricane-Approved Safety and Assurance

## PROTECTION WHERE YOU NEED IT



Hurricane Rated



Home Security



Hail

## FEATURES

- Woven high-tensile 304-grade stainless steel wire mesh secures occupants and provides clear exterior vision.
- Low-profile fixed screen frames maintain architectural design and aesthetics.
- Allows natural light and airflow into your building.
- Hurricane-approved protection for added peace of mind.

## OPTIONS

- Operable egress option for emergency exits.
- Available in 3 different frame colors.
- Custom shapes available to match nearly any opening. (fixed)



High-tensile 304 stainless steel mesh ensures safety with clear exterior visibility

The aluminum frame blends with your home's design, providing strong security and low visual impact

# Secure Frames, Subtle Elegance

## SLEEK, SECURE AND SEAMLESSLY TAILORED

Designed for durability and subtle elegance, the low-profile aluminum frame fits building contours. It is fabricated to integrate with a building's design while providing maximum security and minimal visual impact.

- Compact, space-saving frames combine strength with architectural appeal.
- Frame locking mechanisms secure mesh into a robust forced entry barrier against threats.
- Repels weather and flying debris with certified hurricane strength.



Screen frame samples.



Rectangular and shaped screens secure a Florida home from hurricanes and potential intruders.

# Superior Strength



## UNYIELDING STAINLESS STEEL MESH

Our screens combine exceptional strength frames with security-grade architectural black mesh. Heavier and more durable than fabric or other metal options, our mesh effectively repels flying debris, seasonal extremes, and aggressive attacks to ensure protection for occupants.

- High-tensile 304-grade stainless steel withstands tool and manual forced entry attacks.
- Using architectural grade coatings, our black mesh resists weathering and discoloration over time.
- Designed for salt and weather conditions in coastal areas. (See Use + Care Guidelines)

Our screens are designed and built to be relentlessly resilient and defend against the most aggressive criminal attacks and toughest weather events.



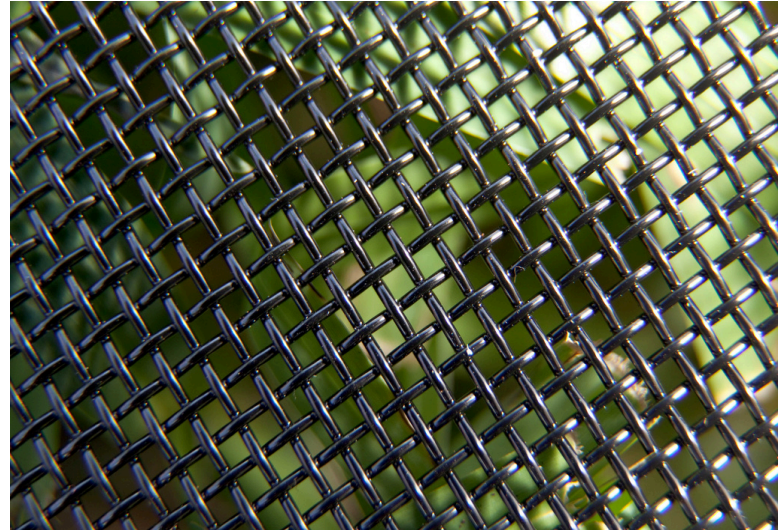
Screens protecting an Ohio home from security threats.

# High-Visibility

## ROBUST SECURITY, UNCOMPROMISED VIEWS

Our fixed window screens provide high visibility, ensuring clear views while safeguarding your space. The always-black mesh is designed for optimal clarity, allowing occupants to see through effortlessly.

- Offers the perfect balance of strength and transparency, ensuring security without compromising on visual access.
- Experience filtered light that blends visibility and shading.
- Offers the perfect balance of strength and transparency, ensuring security without compromising on visual access.



View through our high-tensile 304-grade stainless steel mesh.



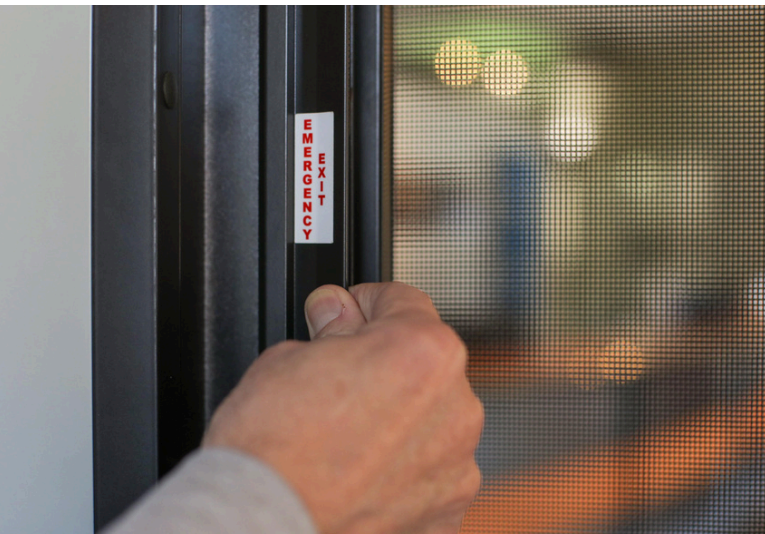
QMI screens provide high visibility to outdoor environments, maintaining views while providing unmatched security and safety.

# Operable Egress Screens

## SAFE, FLEXIBLE, STRONG ESCAPE SCREENS

Equipped with a panic bar for emergency exits, QMi Egress screens offer robust protection for your home, ensuring you and your family are the safe.

- Panic bars enable rapid, safe exits for emergency situations in your home.
- Hinge and lock mechanisms provide easy egress while maintaining security.
- Egress compliant with federal, state and local laws.



Egress screens are easily opened using the panic bar shown here.



Hinges tested to meet hurricane, security, and durability requirements for worry-free operation.

# Frame Shape and Color Options

## FRAME SHAPES

Our custom-built frames, adaptable to shapes like arches, polygons, or other unique designs, enhance your building's security and aesthetic appeal.



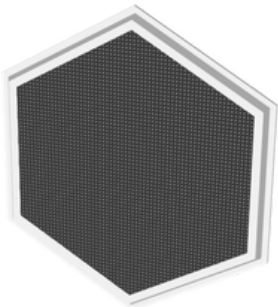
Arch



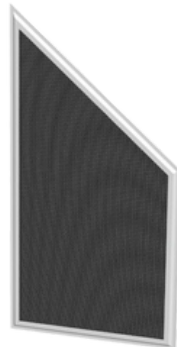
Round



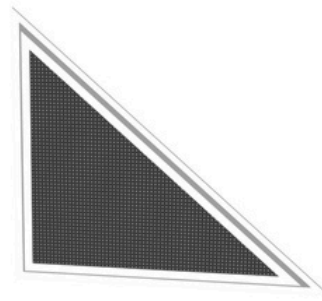
Our custom frames, tailored to a variety of shapes, provide both protection and style.



Hexagon  
(Ref)



Polygon  
(Ref)



Triangle  
(Ref)

## COLORS

Choose from a variety of frame color options that cohesively blend with your business's aesthetics.



White



Bronze



Beige



Custom

Contact your QMi Sales or Project Support Representative for pricing and lead times on custom color options.



# Tested to the Strictest Standards

QMi stainless steel security screens pass forced entry security testing requirements.

They also meet the strict standards for hurricane approval.

- Florida Building Code (FBC) compliant (HVHZ and Non-HVHZ)
- Texas Department of Insurance (TDI)

Confidently secure your property.

## Security and Hurricane Safety Validation



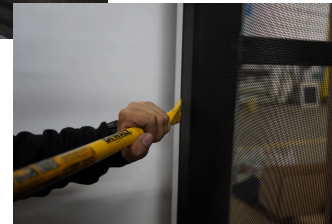
Knife Sheer Test



Impact Test



Large Missile Hurricane

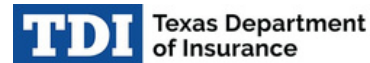


Jimmy/Pry Test

## Certifications



(HVHZ & non-HVHZ)



(3rd Party Evaluation)

*Note: Testing in accordance with TAS 201/202/203 and ASTM E330/E1886/E1996 Missile Level D*

## Industry's Best Warranty\*



*\* Applies to Residential Applications only and customers who follows Use and Care guidelines.*

# Case Study: Residential Storm Protection

## OVERVIEW

A homeowner near Savannah, facing the constant threat of hurricanes, sought a reliable and aesthetically pleasing solution to protect their home. After researching various options, they chose QMi Stainless Steel Hurricane Screens.

QMi's custom-made hurricane screens, featuring a combination of standard and unique shapes, were installed on the home's exterior. The screens not only provided robust protection against hurricane-force winds and debris but also deterred intruders.

The homeowner appreciated the screens' ability to maintain natural light and ventilation, ensuring a comfortable living environment. Their durability, low maintenance, and seamless integration with a home's architecture make them an ideal choice for coastal residents seeking hurricane protection.



Front of home screens blend seamlessly.

*"Our screens fit perfectly and gave us the security we were looking for."*

— HOMEOWNER



Shaped screen on upper window.



Interior views remain bright and inviting.

# Why Choose Us



## AN ENTIRE COMPANY BUILT AROUND SECURITY-DRIVEN INNOVATION

We provide innovative products and unrelenting customer service, protecting what matters most.

## THE PASSIONATE, SINGLE-MINDED MARKET LEADER



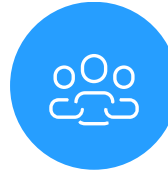
### Superior Product



### Fastest Lead Time



### Ongoing Support



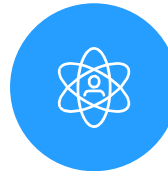
## Customer-Focus

Personalized, attentive care from start to finish.



## Innovation

Creative, unmatched solutions for the most demanding applications.



## Integrity

Honest, responsible, and caring. We treat our customers and each other with respect.



## Quality

Exceptional high-durability products and service. Unrelenting service and support.

## RELATED INDUSTRY AFFILIATIONS



## RELATED PRODUCTS



Qompa Security Shutters



Qompa Hurricane Shutters



AL2 Privacy Shutters

# A Trusted Partner

**With over 35 years of security product experience and more than 40,000 homes and retail locations protected by QMi, we have the skills to do the job right.**

**You can have confidence knowing that your family, assets, and property are well protected.**

