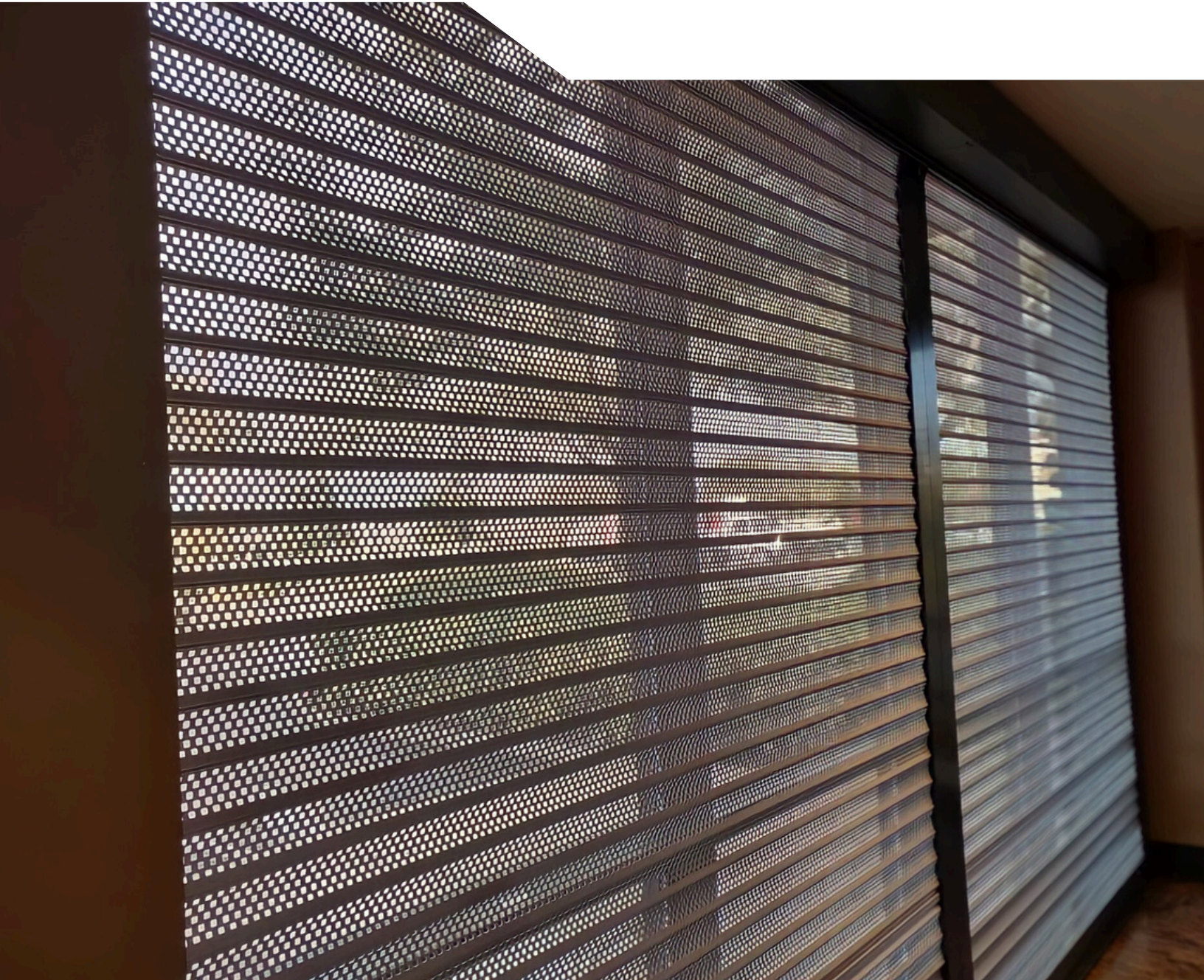


**AL8 Commercial / SECURITY SHUTTERS**

# Unmatched Strength and Security



# Guarding Assets, Preventing Loss Amid Rising Crime

## PROTECTING YOUR BUSINESS FROM FORCED ENTRY AND OTHER MODERN THREATS

In today's climate of escalating retail crime, the physical security imperative is clear and pressing for businesses nationwide. Recent years have seen a significant rise in retail crimes, notably sophisticated and organized retail crime rings, smash-and-grabs robberies, and even crash-and-grabs. Election years only intensify this risk, heightening the potential for civil unrest and rioting.

In this high-risk environment, physical security is critical. QMi AL8 security shutters act as a vital safeguard to protect commercial property, business assets, and company employees.

QMi tailored solutions such as the AL8 shutter provide a robust shield against even the most aggressive attacks. Essential in high-risk areas and during times of societal tension, these shutters are more than a security measure - they're an investment to ensure business continuity.



AL8 security shutters fortify your facility immediately, offering nearly impenetrable protection and total peace of mind for your business.

**In 2023, U.S. businesses faced  
an 8% increase in burglary and  
break-in incidents.**

—FBI Crime Statistics, 2023

**60% of retailers experienced a  
rise in organized retail crime.**

—The National Retail Federation  
(NRF), 2024



**BREAKING NEWS**  
**14 ARRESTS IN SMASH-AND-GRAB CRIME SPREE**  
**EYEWITNESS NEWS**



The shattered remains of a storefront post smash-and-grab spree, highlighting the vulnerability of unprotected businesses.



A jeep halted in its tracks by sturdy AL8 shutters, showcasing their effectiveness in preventing breaches even as brazen as "crash-and-grabs."

# AL8 Security Shutters Deliver Advanced Protection for Businesses Facing Unprecedented Threats

## FORTIFY YOUR FACILITY



Storefront



Municipal



Bars and Restaurants



Pharmacies



Dispensaries



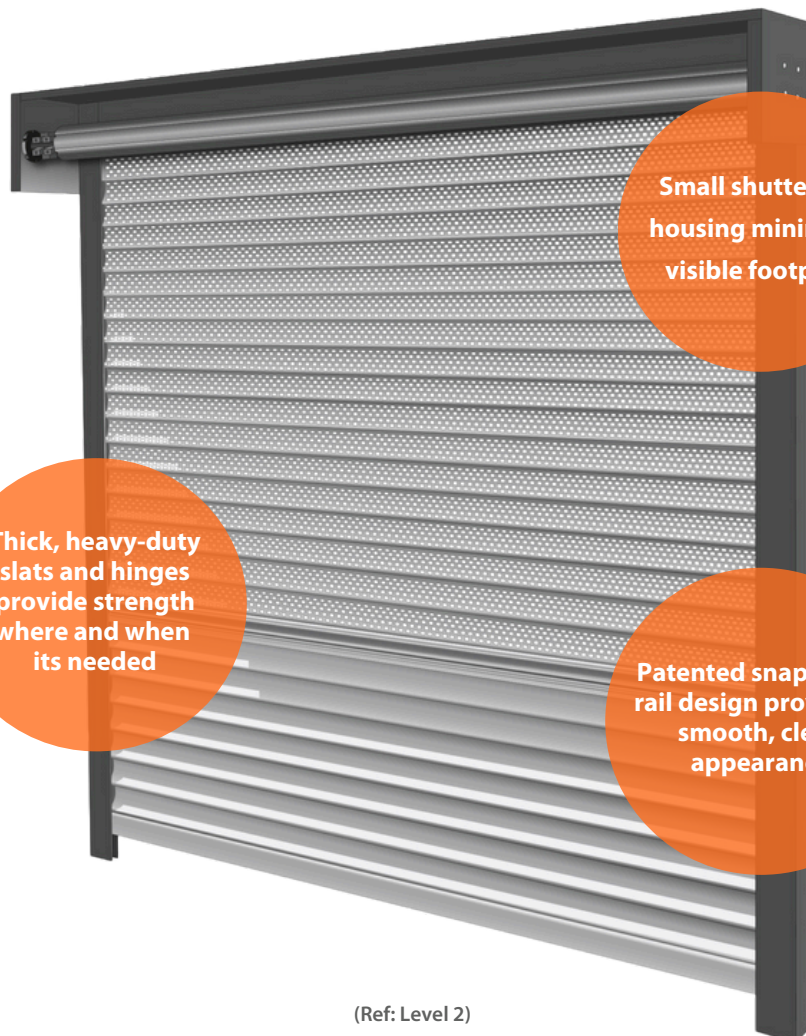
Industrial/Warehouse

## FEATURES

- Precision-engineered system for unparalleled strength.
- Space-saving, industry smallest shutter box and tight roll-up coil.
- Optimized hinge and slat engagement for exceptional durability.
- Patented nesting design and bushing-guide system for enhanced operation.
- Hybrid-snap cover rail for clean look and simple install.
- Wide-span coverage for maximum opening flexibility.

## OPTIONS

- Three (3) security choices tailored to your threat level.
- Perforated slat profile for greater visibility.
- Manual and motorized controls are available.
- Custom colors and range of lock options.
- Code-compliant emergency egress system for motorized door openings.



Small shutter box housing minimizes visible footprint

Thick, heavy-duty slats and hinges provide strength where and when its needed

Patented snap cover rail design provides a smooth, clean appearance

(Ref: Level 2)

# Unparalleled Strength

## STRONG, REFINED, AND BUILT TO LAST

Protect people and property with our meticulously engineered AL8 shutters. Combining sleek design with formidable strength, these shutters stand firm against smash-and-grab threats and retail organized crime.

- Strongest shutter on the market\*, designed and built to last.
- Patented slat and rail systems ensure peak performance and durability.
- Slat hinge receivers and hooks are designed to defend against attacks and operate consistently over time.



All components of the AL8 shutter are designed to work together for maximum strength and longevity.

*\* Based On Design Pressure At Span , Pull-Apart and Sledgehammer Testing*



Wide retail vestibule protected by solid, clear anodized (silver) AL8 shutters.

# Alluring Aesthetics



New snap covers add to the AL8's already appealing aesthetic and are effortlessly installed.

## SLEEK, SEAMLESS AND STUNNINGLY STYLED

Experience aesthetic brilliance with our thoughtfully designed shutters. Merge functionality with finesse, offering a sleek, cohesive look that complements any setting.

- Nested slat system to ensure a tight, slim shutter roll, easily installed below ceilings and blending in with store aesthetics.
- Integrated snap cover that conceals fasteners for a clean, unified appearance.
- Wide range of colors available, unified or mixed across the system to match your brand styling.



Punched (P51) AL8 shutters provide high-visibility and compliment any decor.

# Optimized Performance

## FLAWLESS, FORTIFIED AND FLUID

Enjoy smooth, virtually silent operation.

- Enhanced bushing guide system ensures a smooth and consistent operating experience.
- Optimized tolerances for reduced wear and noise.
- Finger pull and mid-curtain lock options ensure effortless and swift handling and simplified ongoing maintenance.



AL8's finger pull being used to effortlessly pull down and close the shutters.



AL8 shutter protects the doorway of a jewelry store.

# Unwavering Durability



A perforated shutter curtain being tested for back-bend performance.

## RUGGED, RELIABLE, AND RESILIENT

Experience durability like never before with meticulously crafted AL8 shutters. Every element is designed for enduring protection.

- Optimized tolerances for efficient fit and reliable wear over time.
- Enhanced hinge design to resist the elements and maximize longevity.
- Equipped with large diameter end retention screws for maximum strength.
- Slats that resist dents and dings to remain in prime condition over time.



Wide-span, high-security interior AL8 shutters provide visible, robust defense.

# Enhanced Flexibility

## EXPANSIVE, EFFICIENT, AND EXACTING FIT

Protect your commercial spaces with the extended flexibility of AL8 shutters. Cover wide and tall openings with our tailored configurations.

- Spans up to 236 in. width (19 ft, 6 in) or 288 in. height (24 ft) ensure optimal views and accessibility.
- Pre-drilled rail holes ensure a quick, hassle-free, and consistent installation. (hidden by snap covers)
- Mounting options for the most demanding interior and exterior installations.



AL8's pre-drilled rail holes ensure consistent, code-compliant installation.



AL8 protects a pharmacy counter while providing views for both customers and staff.



# Solid Slats



Solid slats provide a powerful visual deterrent and shield your store from aggressive break-in attacks.

## REFINED AND RELIABLY SECURE

Our solid aluminum shutters provide unparalleled protection for your business. Designed to be virtually indestructible, they stand as a formidable barrier against intruders and extreme weather, all while preserving the aesthetics of your storefront.

- Unyielding physical protection against the most aggressive attacks.
- Privacy that denies prying eyes, making it difficult for burglars to plan attacks.
- Integrated into surrounding building structures for clean appearance.
- Interior or exterior installation based on your application needs.



Exterior storefront protection provides clean appearance, secures building from attacks, and adds hurricane-rated defense for a Florida retailer.

# Perforated Vision Slats

## PRISTINE, PROMINENT, PEERLESSLY VISIBLE

Incorporating perforated slat security into your business fortifies your building and enhances your customers' overall shopping experience. It's a win-win solution that combines style, functionality, and safety.

- Visibility that promotes 24/7 merchandising while ensuring security.
- Deterrent that burglars can see to reduce break-in attempts while supporting your branding and product requirements.
- Range of perforation options available.



Punched (P51) slats provide excellent visibility.



Perforated vision slats allow for high-visibility of merchandise and branding at night.

# Security Levels Tailored For You



## LEVEL 1 (85%)

### STRONGEST SHUTTER IN THE INDUSTRY

Innovative slat, rail, and system design ensures unmatched performance for the most demanding security needs.

Solid and punched AL8 system for majority of security needs.



## LEVEL 2 (10%)

AL8 Level 1 system with added heavy duty slats in attack zones, enhanced retention and structural attachment methods.

Auto-locking base slats to augment motorized units.



## LEVEL 3 (SPECIALTY) (5%)

AL8 Level 2 system further enhanced with heavy duty base slat for large spans and other customized solutions specific to your needs.

Tubular motor/Egress option to allow complete motorization over all doors and windows.



# Motorized Egress Option

## EGRESS INNOVATION

QMi has developed an industry-first egressible tubular motor option for the AL8 system.

- Exclusive code-compliant egress when motorizing over doors.
- Space-saving AL8 nesting design and tubular motor ensure a low-profile, below-ceiling installation.
- Discretely-integrated Emergency Release Device (ERD) to operate shutters during power failure or emergency condition.



Emergency Release Device (ERD)



Punched (P51) storefront security showing inside-out visibility.

# Housing, Slat, and Control Options

## HOUSING SHAPES

Housing style choices make it easy to match the aesthetics of your business.

Constructed from 3105-H12 alloy 0.034 in. thick 6063 - T6 aluminum, and available in 6, 6.5, 7, 8 and 10 in. sizes.



90° angle  
(square)



45° angle



Round

## SLAT STYLES

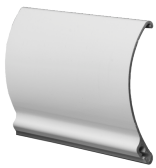
Solid and perforated designs for robust security with aesthetics.

### Solid

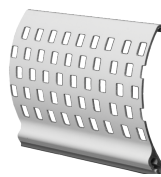
Powerful visible deterrent, creating a robust physical barrier.

### Perforated

Balances security with maximum visibility, protecting store views and attracting customers.

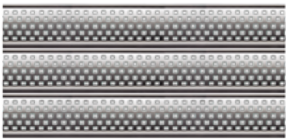


Solid

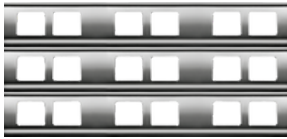


Perforated

## PUNCH PATTERNS



P51



P21



P11

## CONTROLS

Manual and motorized choices, both standard and override, provide effortless operation across diverse openings.

### Manual Operation (Spring Assist or Gear)

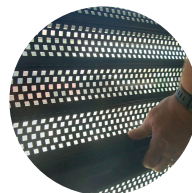
Cost-effective, spring-assisted push up/pull down or crank pole (gear) systems.

### Wired Motors

Key or toggle wall switch activation for day-to-day reliability, either single or multi shutter control.

### Wireless Remote Motor (HZ)

Remote operation for commercial environments seeking flexibility.



Spring Assist  
(Manual)



Crank Pole  
(Manual)



Wall Switch (Key or Toggle)  
(Motor)



Wireless Remote (HZ)  
(Motor)

QMi partners with industry-leading motor manufacturers like Somfy® to offer the highest quality drive, software, and control options.

# Lock and Color Options

## SECURE LOCKS

Our patented lock slat designs provide easy locking functionality for many shutter use cases. Enjoy a hassle-free installation and minimal upkeep with our durable, ergonomic options.

### Base Slat Thumbturn

- Stand-alone or paired with a mid-curtain lock.
- Center or off-center (custom) placement.
- Thumbturn or double-key configurations.

### Slide Lock

- Easy-to-use slide mechanism.
- Robust security for window and/or knee wall applications.

### Mid-Curtain Lock

- Light-weight, easy-to-use lock as stand-alone or paired with a base slat thumbturn.
- Centered or off-center (custom) placement.
- Ergonomic placement for windows or selective doors.

### Motor Brake

- Motorized shutters leverage the motor brake to provide locking for entire curtain.
- High-strength base slat extrusion provides weight and stiffness.

### Auto-Lock

- Auto-locking slat for Level 2 or 3 security applications.
- Used on motorized window or egress door solutions to supplement motor brakes.



Base Slat Thumbturn



Slide Lock



Mid-Curtain Lock



Motor Brake



Auto-Lock

## COLORS

Powder coat and wet paint options for both standard and custom colors available.



White



Ivory



Beige



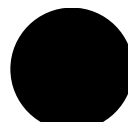
Bronze



Gray



Clear Anodized  
(Silver)



Black Anodized



Custom

Contact your QMi Sales or Project Support Representative for pricing and lead times on custom color options.

# Tested to the Strictest Standards

AL8 COMMERCIAL SHUTTERS MEET THE STRICT STANDARDS FOR HURRICANE APPROVALS.

- Florida Building Code (FBC) (HVHZ & non-HVHZ)
- Texas Department of Insurance (TDI)
- Miami-Dade County Notice of Approval (NOA)

Confidently secure your commercial property, inside or out.



QMi loader validating a shutter prior to shipment.

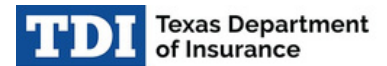
## Certifications



(HVHZ & non-HVHZ)



(NOA)



(SHU)

*Note: Testing in accordance with TAS 201/202/203 and ASTM E330/E1886/E1996 Missile Level D*

## Warranty\*



*\* Applies to Commercial Applications only and customers who follow Use and Care Guidelines.*

# Case Study: Collectibles Store

## OVERVIEW

QMi was tasked with securing a high-profile property leased by a famous rapper who started his own collectibles store in Inglewood, CA. Positioned in a bustling, crime-prone area, the store required custom security solutions that provided industry-leading protection while preserving the building's visual look.

A bronze manually operated AL8 storefront shutter was installed to ensure a seamless blend of functionality and aesthetics. This installation accommodated door handles and integrated harmoniously with the storefront's design.

To safeguard the store's large windows, two motorized AL8 shutters were installed next. These provided the operator flexibility that the store was looking for while ensuring the smallest possible box housing to preserve store appeal. A single-door shutter on the side of the building was also installed to ensure complete coverage for all potential access points.

Implementing AL8 shutters was a pivotal step in fortifying the high-profile storefront. They ensure a welcoming and visually appealing atmosphere while protecting the property and the store's patrons.



This QMi AL8 security shutter provided the store's side door the added dependable security and peace of mind that it badly needed.



The solid slat shutters present a formidable visual deterrent for the store when in the closed position.

*"We're very happy with our QMi Shutters. The installation crew was very friendly and efficient, and our staff feels safer than ever."*

**—Store Associate**



An exterior mounted AL8 shutter seamlessly blends in with the storefront entrance and goes unnoticed during operating hours.



# Why Choose Us



## AN ENTIRE COMPANY BUILT AROUND SECURITY-DRIVEN INNOVATION

We provide innovative products and unrelenting customer service, protecting what matters most.

## THE PASSIONATE, SINGLE-MINDED MARKET LEADER



### Superior Product



### Fastest Lead Time



### Ongoing Support



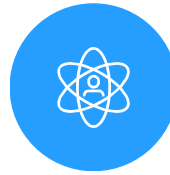
### Customer-Focus

Personalized, attentive care from start to finish.



### Innovation

Creative, unmatched solutions for the most demanding applications.



### Integrity

Honest, responsible, and caring. We treat our customers and each other with respect.



### Quality

Exceptional high-durability products and service. Unrelenting support.

## RELATED INDUSTRY AFFILIATIONS



## RELATED PRODUCTS



Riot Glass

Front



Security Cases

Middle



High-Security Exit Doors

Back

# A Trusted Partner

With over 35 years of security product experience and more than 40,000 retail locations protected by QMi, we have the skills to do the job right.

You can have confidence knowing that your investment is well protected.

