

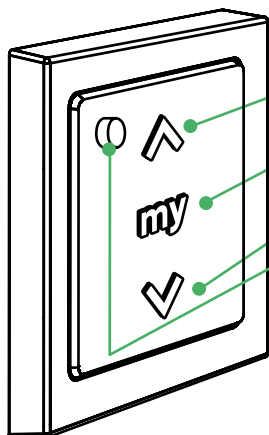
Part Numbers:
Smooove 1
#1811533
Smooove 4
#1811748

Smooove® 1 & 4 RTS

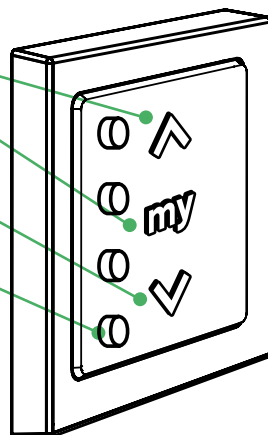
The Smooove 1 RTS controls a single group of window coverings.
The Smooove 4 RTS controls up to four different groups of window coverings.

1 Introduction

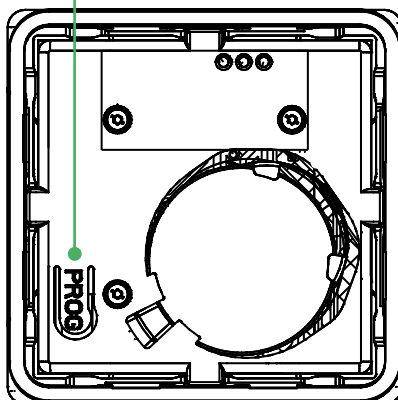
Smooove 1 RTS



Smooove 4 RTS



- A. Button (raise, switch on, open, tilt)
- B. "my" button (stop, go to favorite position)
- C. Button (lower, switch off, close, tilt)
- D. Channel selection indicators
- E. Programming (PROG) button
(On backside of both models)

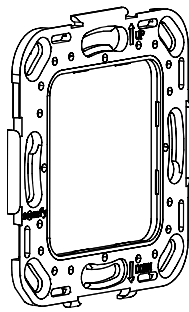


2 Installation

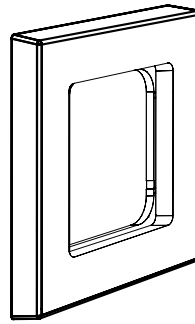
A. Mounting frame

B. Smoove frame

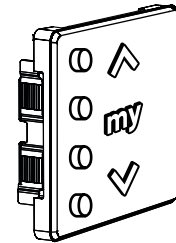
C. Smoove 1 or 4
(4 is shown)



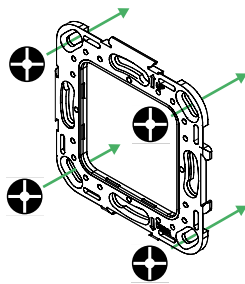
A.



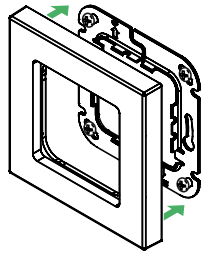
B.



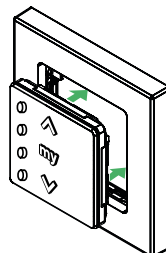
C.



1.



2.



3.

Install on a clean, flat interior wall within 35 feet of window coverings.

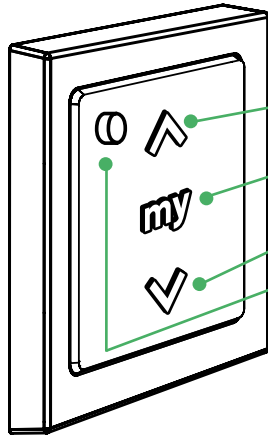
1. Install the mounting frame using provided, countersunk screws in corners of plate to the wall.
2. Snap the frame onto the mounting plate (notch facing downward).
3. Clip the Smoove RTS module onto the assembly.
4. Product can be mounted to the wall using double sided tape (3M tape)



Note: Locating the module near a metal frame or surface may impede the product's operation.

3

Operation for Smoove 1



- A. Button (raise, switch on, open, tilt)
- B. "my" button (stop, go to favorite position)
- C. Button (lower, switch off, close, tilt)
- D. Channel selection indicator
- E. Programming (PROG) button (On backside of faceplate)

Pairing a Smoove 1 to a window covering

- Press and hold the Programming (PROG) button on the window covering motor until the window covering moves up and down. **Note: You have 2 minutes to successfully complete RTS programming or it will default back to factory setting, and you will have to start process over again.**
- Press the Programming (PROG) button (E) on the back of the Smoove 1 until the window covering begins to move up and down.
- The Smoove 1 is now paired with the window covering motor.

Daily Use

- On the Smoove 1, press the **^** (A) or **v** (C) to open or close the window covering.
- To stop the window covering at a specific position, press the **"my"** button (B).

Creating Preset Positions

To create a preset position:

- Adjust the window covering to the desired position.
- Press **"my"** on the Smoove 1 until the window covering moves up and down. The preset is now activated.

To delete a preset position

- Press the **"my"** button. The window covering moves to a preset position.
- Press the **"my"** button again until the window covering moves up and down. The preset position has been deleted.

Daily use of preset positions

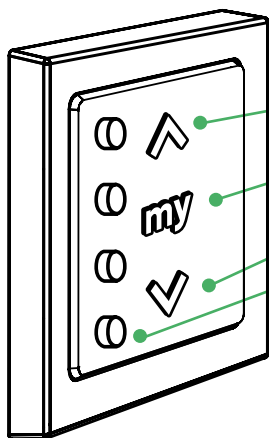
- Briefly press the **"my"** button. The window covering will move to the preset position.

3

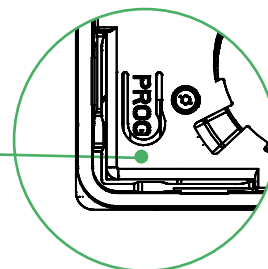
Operation for Smoove 4

The Smoove 4 operates four different groups of window coverings.

As you pair your Smoove 4 to each window covering controller, you also build each grouping.



- A. Button (raise, switch on, open, tilt)
- B. "my" button (stop, go to favorite position)
- C. Button (lower, switch off, close, tilt)
- D. Channel selection indicator
- E. Programming (PROG) button
(On backside of faceplate)



Pairing a Smoove 4 to a window covering and creating channels

- Press and hold the Programming (PROG) button on the window covering motor until the window covering moves up and down. **Note: You have 2 minutes to successfully complete RTS programming or it will default back to factory setting, and you will have to start process over again.**
- Assign the window covering to a channel by selecting that channel (D) on the Smoove 4.
- Press the Programming (PROG) button (E) on the Smoove 4.
- The window covering will move up and down, indicating a successful pairing.
- Repeat this procedure, assigning window coverings to channels until you have paired all the window coverings to the Smoove 4.
- To remove a window covering from Smoove 4 control or to change its channel:
 1. Press Programming (PROG) on the mounted window covering motor.
 2. Press the channel button (D) on the Smoove 4 to which the window covering is assigned.
 3. Press the Programming (PROG) button (E). The window covering will move up and down, indicating it is now removed from the Smoove 4 and its assigned channel.

Daily Use

- On the Smoove 1, select a channel, then press the **^** (A) or **v** (C) to open or close the window covering.
- To stop the window covering at a specific position, press the "my" button (B).

Creating Preset Positions

To create a preset position:

- Press the channel number (E).
- Adjust the window coverings to the desired position.
- Press the "my" button (B) until the window coverings move up and down. The preset is now activated.

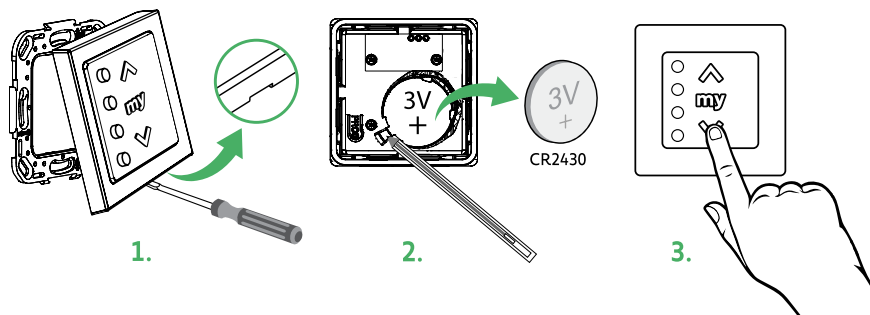
To delete a preset position

- Press the channel number (E).
- Press the "my" button (B). The window coverings move to a preset position.
- Press the "my" button (B) again until the window coverings move up and down. The preset position has been deleted.

Daily Use of Preset Positions - The "my" button on the Smoove 4 opens and closes your window coverings to your preferred preset conditions.

- Press the channel button (E).
- Press the "my" button (B).
- The window covering will move to a preset position.

4 Battery Replacement



1. Unclip the frame by using a small flat head screwdriver to open (against the small groove shown in image 1)
2. Remove old battery then insert a new CR 2430 3 V battery, (+) side up.
3. Replace the frame and Module onto the mounting frame by pressing back to original position.

5 Troubleshooting

Observation	Possible Causes	Solution
The window covering does not move	Weak battery	Insert new battery
	Window covering not paired with device	See section 3 Pairing a Smoove
	Signal interference from nearby electronics	Turn off nearby electronics

6 Replacing a lost or broken Smoove 1 or 4 Controller

To Replace a lost or broken remote, follow these steps with the **NEW** transmitter.

1. Press and hold the Programming (PROG) button on the window covering motor until the window covering moves up and down.
2. Press the Programming (PROG) button (E) on the back of the **Smoove 1** until the window covering begins to move up and down.
3. The Smoove 1 is now paired with the window covering motor.
4. Follow steps of the installed motor to set the upper and lower limits



Note: Visit <https://store.somfysystems.com/> to purchase an additional or replacement product.



AS WITH ANY PRODUCT INVOLVING GENERATION OF ELECTRICAL POWER, CAUTION MUST BE USED AT ALL TIMES. PLEASE CAREFULLY READ AND FOLLOW ALL OF THE INSTRUCTIONS.

This device is FCC certified and complies with part 15 of the FCC rules.
RTS compatibility: RTS transmitters are capable of operating any RTS motor.